



World of Stones

LIVE WITH NATURE



www.worldofstonesusa.com

NATURAL STONE & PORCELAIN COLLECTION



World of Stones
LIVE WITH NATURE

Table of Contents

Who we are & why World of Stones	4
Paving Slabs Library	5
Exotic Collection	
Castle Grey	8
Rainbow	9
Ochre Yellow	10
Teak	11
Imperial White	12
Premia Collection	
Sierra	13
Sedona Rustic	14
Castle Grey	15
Cloudy Black	16
Desert Buff	17
Sunset Buff	18
Autumn Brown	19
Lanier	20
Tumbled Pavers	
Castle Grey	21
Sunset Buff	21
Porcelain Collection	
Travertine	22
Silver Grey	23
Cappucino Beige	23
GeoCeramica Paving	
Fiordi Sand 40	24
Fiordi Fumo 40	25
Gris Claro 60	25
○ Fire Pit	26
○ Pier Caps	27
○ Sills	27
○ Treads	28
○ Steps	30
○ Copings	32
○ Stepping Stones	33
○ Sizes and Laying Pattern	34
○ General Information	35
○ Infrastructure & Packaging	37

Who we are ?



Since its foundation in 1999 World of Stones has grown to be one of the leading Indian Natural Stone suppliers with an unrivalled reputation for quality and service.

We were and remain a family run company who holds traditional values, all of which are shared by our 'extended family' of over 300 employees.

Our professional and committed team who service over 20 countries worldwide, constantly plan for future investments and developments to ensure continued leadership in our sector.



Why choose World of Stones ?

Simply because we are committed for the long term and resolute in offering:

Quality and Service

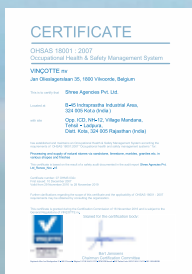
We are fully accredited with International certification ISO 9001:2008. In addition, to ensure highest levels of service we have Sales, Distribution and Customer Service Centres in the USA, Europe and Asia.

Corporate Social Responsibility

We are responsible Employers upholding Ethical and Safety values. We are fully accredited with International certification OHSAS 18001:2007 and are regularly audited by Independent Organisations to ensure we comply with International Ethical Trading standards.

Environmentally Responsible

We are fully accredited with International certification ISO 14001:2004. We have a sense of duty to nature and our environment, we use Green energy to process stone which is produced by our own wind turbines.



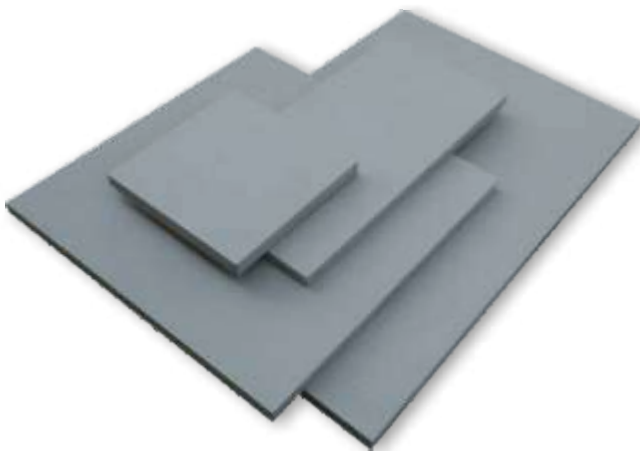
EXOTIC COLLECTION

Exotic Collection is a range of very high quality ethically sourced sandstone paving, which is precision cut and finished to give a quality and appearance which is second to none. Its available in five different shades so whatever your style and taste, there's sure to be a perfect option for your outdoorspace.

PAVING SLABS LIBRARY



Ochre Yellow



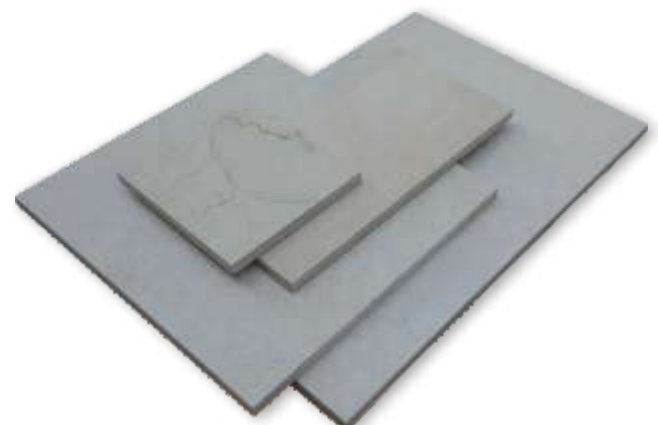
Castle Grey



Teak



Rainbow



Imperial White

PREMIA COLLECTION

Premia Collection is a range of high quality natural stone paving. Ethically sourced and hand selected for both purity of color and dimensional accuracy, the paving is calibrated to a consistent thickness to make laying quick and easy. This collection is available with both sawn edges and hand split edges. Premia Collection with Sawn edges (available in seven different colors) brings a clean modern look to the range whereas Hand split edges (available in five different colors) are specially processed to deliver an aged rustic look.



Castle Grey (hand split edges)



Desert Buff (hand split edges)



Autumn Brown (hand split edges)



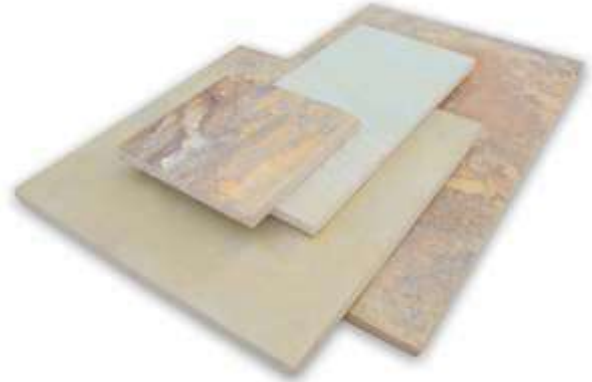
Sunset Buff (hand split edges)



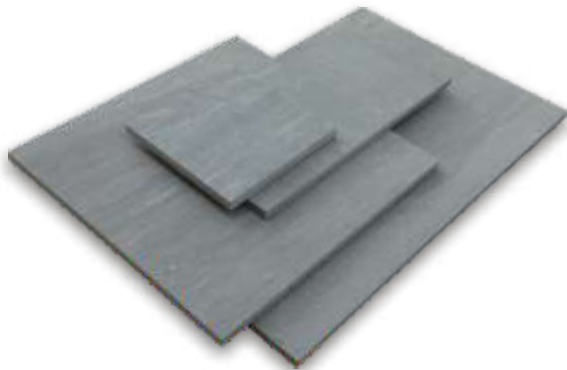
Lanier (hand split edges)



Castle Grey (sawn edges)



Sedona Rustic (sawn edges)



Sierra (sawn edges)



Cloudy Black (sawn edges)



Desert Buff (sawn edges)



Autumn Brown (sawn edges)



Sunset Buff (sawn edges)

Castle Grey



This beautiful mellow Grey color sandstone with Suede finish will add a chic and fashionable touch to any landscaping project.

Sizes (Nominal): Project Packs (36"x24" – 13 pcs., 24"x24" – 13 pcs., 24" x 12" – 13 pcs., 12" x 12" – 9 pcs.)

This Product is available in: Paving Slabs, Copings (refer page No. 32), Steps (refer page No. 30), Sills (refer page No. 27), Pier Caps (refer page No. 27)

Will create a perfect combination with: Castle Grey Treads (refer page No. 28)

Rainbow



©Copyright Brad Stone

An unusual, colorful sandstone which gives an appearance of rainbow swirls.

Sizes (Nominal): Project Packs
(36"x24" – 13 pcs., 24"x24" – 13 pcs.,
24" x 12" – 13 pcs., 12" x 12" – 9 pcs.)



EXOTIC COLLECTION

Ochre Yellow



A warm cream colored sandstone with subtle yellow and orange hues. It will add a cozy warmth to any contemporary scheme.

Sizes (Nominal): Project Packs {36"x24" – 13 pcs., 24"x24" – 13 pcs., 24" x 12" – 13 pcs., 12" x 12" – 9 pcs. }

This Product is available in: Paving Slabs, Treads (refer page No. 29) and Copings (refer page No. 32)

Teak



An amazing and highly sought sandstone with an aged teak timber effect.

Sizes (Nominal): Project Packs (36"x24" – 13 pcs., 24"x24" – 13 No., 24" x 12" – 13 No., 12" x 12" – pcs.)

Imperial White



The epitome of cutting edge style and contemporary satisfaction, its a beautiful white colored paving with shades of buff.

Sizes (Nominal): Project Packs (36"x24" – 13 pcs., 24"x24" – 13 pcs., 24" x 12" – 13 pcs., 12" x 12" – 9 pcs.)

This Product is available in: Paving Slabs, Treads (refer page No. 29).

Will create a perfect combination with: Sunset Buff Steps (refer page No. 30), Copings (refer page No. 32), Sills (refer page No. 27), Pier Caps (refer page No. 27).

Sierra



Sierra Sandstone is a beautiful Charcoal colored Sandstone. This superior quality paving has an aura of individuality and permanence.

Sizes (Nominal): Project Packs (36"x24" – 13 pcs., 24"x24" – 13 pcs., 24" x 12" – 13 pcs., 12" x 12" – 9 pcs.)

This Product is available in: Paving Slabs with Sawn edges.

Sedona Rustic



With its superb color and veining variations combined with Natural Fossils and Rustic bends, Sedona Rustic Sandstone is a stunning and beautifully distinctive paving solution.

Sizes (Nominal): Project Packs (36"x24" – 13 pcs., 24"x24" – 13 pcs., 24" x 12" – 13 pcs., 12" x 12" – 9 pcs.)

This Product is available in: Paving Slabs with Sawn edges, Treads (refer page No. 29).

Will create a perfect combination with: Ochre Yellow Copings (refer page No. 32).

Castle Grey



Sawn edges

This beautiful Grey color sandstone with Riven finish will give a cool, neutral and balanced effect to any landscaping project.

Sizes (Nominal): Project Packs (36"x24" – 13 pcs., 24"x24" – 13 pcs., 24" x 12" – 13 pcs., 12" x 12" – 9 pcs.),

Single Size Packs: 36"x24" – 28 pcs., 24"x24" – 40 pcs., 24" x 12" – 85 pcs., 12" x 12" – 85 pcs.

This Product is available in: Paving Slabs in Sawn Edges and in Hand Split edges, Treads (refer page No. 28), Stepping Stones (refer page No. 33).

Will create a perfect combination with: Castle Grey Treads (refer page No. 28) / Steps (refer page No. 30), Copings (refer page No. 32), Sills (refer page No. 27), Pier Caps (refer page No. 27).



Hand split edges

Cloudy Black



Cloudy Black is predominantly black to dark grey colored sandstone with brownish-yellow mottling. This beautiful paving will bring style and sophistication to any outdoor space.

Sizes (Nominal): Project Packs (36"x24" – 13 pcs., 24"x24" – 13 pcs., 24" x 12" – 13 pcs., 12" x 12" – 9 pcs.)

This Product is available in: Paving Slabs with Sawn edges.

Desert Buff



Desert Buff is an exquisite sandstone paving with a very distinctive texture that gives each flagstone its own unmistakable character; some are almost smooth, while others have a unique riven profile. Desert Buff displays a varied color palette of warm cream, buff and white tones.

Sizes (Nominal): Project Packs (36"x24" – 13 pcs., 24"x24" – 13 pcs., 24" x 12" – 13 pcs., 12" x 12" – 9 pcs.)

Single Size Packs: 36"x24"– 28 pcs., 24"x24"–40 pcs., 24" x 12"–85 pcs., 12" x 12"–85 pcs.

This Product is available in: Paving Slabs in Sawn Edges and in Hand Split edges.

Will create a perfect combination with: Ochre Yellow or Sedona Rustic Treads (refer page No. 29) and Ochre Yellow Copings (refer page No. 32).



Sunset Buff



Sawn edges



Hand split edges

Sunset Buff is a beautiful riven sandstone that comes in varying shades of buff, with occasional brown tones. These subtly graduated color shades ranging from beige to buff and light brown makes it ideally suited for use in a wide variety of modern garden designs.

Sizes (Nominal): Project Packs (36"x24" – 13 pcs., 24"x24" – 13 pcs., 24" x 12" – 13 pcs., 12" x 12" – 9 pcs.)

Single Size Packs: 36"x24" – 28 pcs., 24"x24" – 40 pcs., 24" x 12" – 85 pcs., 12" x 12" – 85 pcs.

This Product is available in : Paving Slabs in Sawn Edges and in Hand Split edges ,Treads (refer page No. 28), Stepping Stones (refer page No. 33).

Will create a perfect combination with: Sunset Buff Steps (refer page No. 31), Copings (refer page No. 32), Sills (refer page No. 27), Pier Caps (refer page No. 27).

Autumn Brown



Autumn Brown sandstone is a hard-wearing quartzitic sandstone, relatively consistent in both texture and color. Its neutral light brown color shades make it extremely versatile; it can be used very effectively in traditional garden designs but it is equally at home in much more contemporary schemes.

Sizes (Nominal): Project Packs (36"x24" – 13 pcs., 24"x24" – 13 pcs., 24" x 12" – 13 pcs., 12" x 12" – 9 pcs.)

Single Size Packs: 36"x24" – 28 pcs., 24"x24" – 40 pcs., 24" x 12" – 85 pcs., 12" x 12" – 85 pcs.

This Product is available in: Paving Slabs with hand split edges, Treads (refer page No. 29).

Lanier



Lanier sandstone is a hard-wearing quartzitic sandstone, relatively consistent in both texture and color. Its neutral light green to brown color shades make it extremely versatile; it can be used very effectively in traditional garden designs but it is equally at home in much more contemporary schemes.

Sizes (Nominal): Project Packs (36"x24" – 13 pcs., 24"x24" – 13 pcs., 24" x 12" – 13 pcs., 12" x 12" – 9 pcs.)

This Product is available in: Paving Slabs with hand split edges, Treads (refer page No. 29).

Castle Grey



Available in two colours, Castle Grey and Sunsett Buff, our Tumbled Pavers have Natural Riven Surface with sawn edges. These are Tumbled to give Aged Appearance

Sizes (Nominal): Project Packs (6"x6" – 180 pcs., 6"x9" – 180 pcs., 6" x 12" – 90 pcs.)

Sunset Buff



PORCELAIN COLLECTION

Available in 3 different designs, our Porcelain collection in 20mm thickness, rectified with R11 surface finish is designed for those who are looking for the perfect balance between technical performance and aesthetic appeal in outdoor spaces.

An exceptionally dense material, our porcelain paving is extraordinarily hard-wearing. Scratch resistant too, it's perfect for those high footfall paths.

Consistently accurate sizes allow our porcelain paving to be laid with thin joints that create that desirable modern appearance to your garden and the intentionally varied finishes, combined with subtle color and surface variations, further enhance its individuality.

Sizes (Nominal) : Project Packs (36"x24" – 13 pcs., 24"x24" – 13 pcs., 24" x 12" – 13 pcs., 12" x 12" – 9 pcs.)

Single Size Packs: 24"x24" – 68 pcs.

Travertine



Silver Grey



Cappuccino Beige



GEOCERAMICA PAVING

GeoCeramica is the best of both worlds, a porcelain face with a permeable concrete backing that allows you to install porcelain just like a concrete paver. The porcelain face offers unmatched durability, texture and usability and the stabikorn concrete backing offers permeability, pre-built spacers and an unmatched strength. Its available in 3 different designs.

Fiordi Sand 40



Fiordi Sand 40

Inspired by some of nature's rarer quartzite's, Fiordi Sand has a textured & variegated surface which breaks the light to bring intriguing tones and shade effects to your outdoor space.

Size (Nominal) : 24"x24"x1.5"





Fiordi Fumo 40



Fiordi Fumo 40
Size (Nominal) : 24"x24"x1.5"

Gris Claro 60



Gris Claro 60
Bluestone 2 Drive derives its aesthetics from a mix of fine Granite and Bluestone giving a very elegant speckled surface pattern. Available in Gris Claro, Bluestone 2 Drive has an extra thick under layer of Stabikorn which combined with the virtual impermeability and stain resisting properties of its porcelain face makes it ideal for driveways and light commercial applications.
Size (Nominal): 24"x24"x2.5"

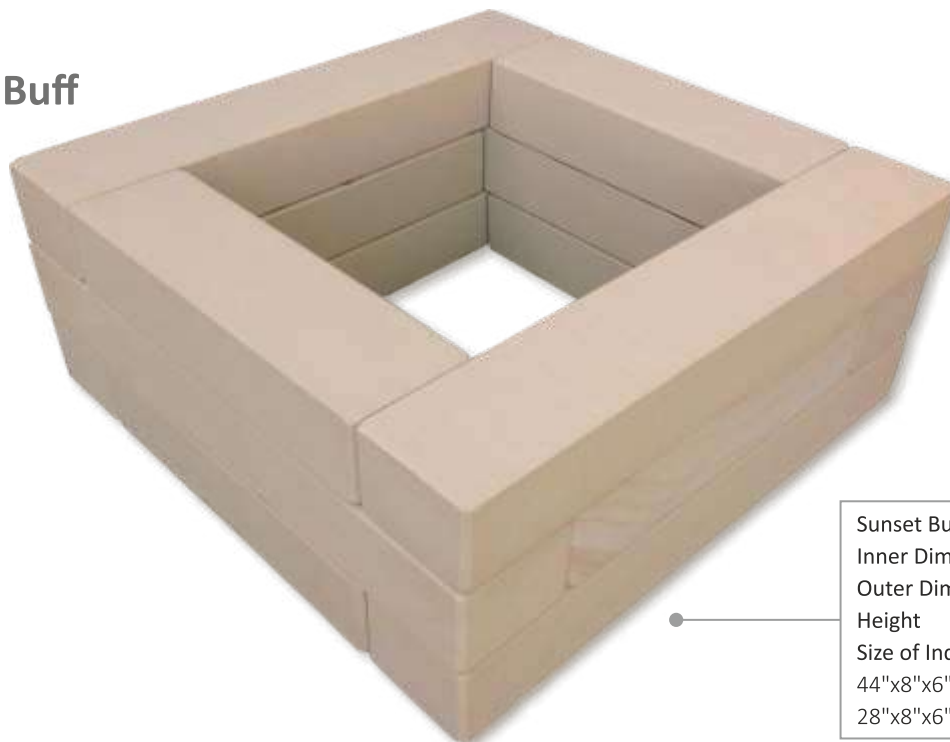
FIRE PIT

Basaltino



Basaltino:
Inner Dimension : 28" x 28"
Outer Dimension : 48" x 48"
Height : 18"
Size of Individual Pieces:
14"x8"x4"-16 Pcs
11"x8"x4"-32 Pcs
48"x10"x2"-2 Pcs
28"x10"x2"-2 Pcs

Sunset Buff



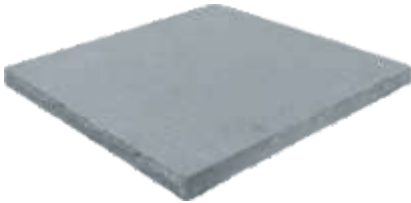
Sunset Buff:
Inner Dimension : 28" x 28"
Outer Dimension : 48" x 48"
Height : 18"
Size of Individual Pieces:
44"x8"x6"-6 Pcs
28"x8"x6"-6 Pcs

To avoid damage, this product must be installed together with a metal insert or Fire Brick lining.

PIER CAPS

World of Stones
LIVE WITH NATURE

Castle Grey



Sunset Buff



Sunset Buff/Castle Grey

Size : Standard Length: 24"
(Nominal) Standard Width: 24"
Standard Thickness: 2"
Finish : Flamed & all edges
rock faced

Sunset Buff/Castle Grey

Size : Standard Length: 28"
(Nominal) Standard Width: 28"
Standard Thickness: 2"
Finish : Shotblasted & all edges
rock faced

Sierra

Sierra

Size : Standard Length: 28"/32"
(Nominal) Standard Width: 28"/32"
Standard Thickness: 2"/3"
Finish : Natural & all edges
rock faced



Sunset Buff



Sunset Buff

Size : Standard Length: 24"/28"
(Nominal) Standard Width: 24"/28"
Standard Thickness: 2"
Finish : Natural & all edges
rock faced

Castle Grey

Size : Standard Length: 24"/28"
(Nominal) Standard Width: 24"/28"
Standard Thickness: 2"
Finish : Natural & all edges
rock faced

SILLS



Castle Grey

Size : Standard Length: 3'
(Nominal) Standard Width: 2.5"
Standard Thickness: 2"
Finish : Surface Suede, Front long edge rock faced &
three edges sawn



Sunset Buff

Size : Standard Length: 3'
(Nominal) Standard Width: 2.5"
Standard Thickness: 2"
Finish : Surface Suede, Front long edge rock faced &
three edges sawn



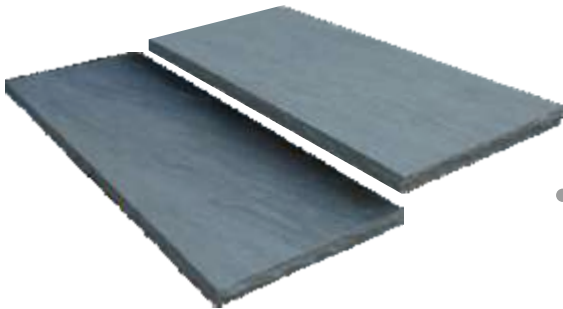
Sierra

Size : Standard Length: 3'
(Nominal) Standard Width: 2.5"
Standard Thickness: 2"
Finish : Surface Natural, Front long edge rock faced &
three edges sawn

Whether you are looking for elegant and formal Risers or something a bit more rustic in appearance, we have a comprehensive choice of Treads available in six different colors with different textures and variety of sizes. Moreover, these can also be used as wall caps to make a perfect design statement.



Imperial White



Castle Grey

Sizes : Standard Length: 4', 6', 8'
(Nominal) Standard Width: 12", 14", 18", 24"
Standard Thickness: 2"
Finish : Top Natural, edges rock faced



Sunset Buff

Sizes : Standard Length: 4', 6', 8'
(Nominal) Standard Width: 12", 14", 18", 24"
Standard Thickness: 2"
Finish : Top Natural, edges rock faced



Autumn Brown

Sizes : Standard Length: 6'
(Nominal) Standard Width: 12", 14", 18", 24"
Standard Thickness: 2"
Finish : Top Natural, edges rock faced



Sedona Rustic

Sizes : Standard Length: 6'
(Nominal) Standard Width: 12", 14", 18"
Standard Thickness: 2"
Finish : Top Natural, edges rock faced



Lanier

Sizes : Standard Length: 6'
(Nominal) Standard Width: 12"
Standard Thickness: 2"
Finish : Top Natural, edges rock faced



Ochre Yellow

Sizes : Standard Length: 6'
(Nominal) Standard Width: 12", 14", 18"
Standard Thickness: 2"
Finish : Top Honed, edges rock faced



Imperial White

Sizes : Standard Length: 6'
(Nominal) Standard Width: 12", 14", 18"
Standard Thickness: 2"
Finish : Top Suede, edges rock faced



Imperial White



Castle Grey



Suede textured with rock faced edges, available in two different colours, these steps create contemporary beauty while maintaining the natural flow.



Sunset Buff



Castle Grey

Sizes : Standard Length: 4'
(Nominal) Standard Width: 16"
Standard Thickness: 6"

Finish : Surface Suede, 3 edges rock faced &
1 long edge sawn.



Sunset Buff

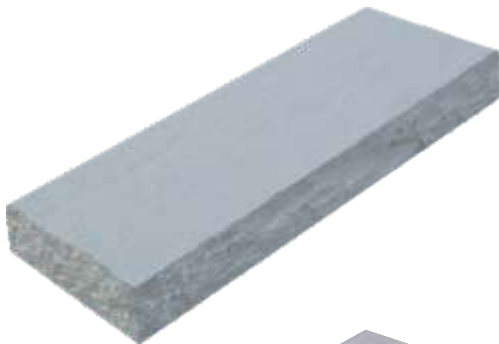
Sizes : Standard Length: 4'
(Nominal) Standard Width: 16"
Standard Thickness: 6"

Finish : Surface Suede, 3 edges rock faced &
1 long edge sawn.

Surface Natural with rock faced edges, these steps add the elegance of natural stone steps in your garden or patio by using our well crafted and hand dressed risers. These steps are available in two different colors.



Castle Grey



Castle Grey

Sizes : Standard Length: 4'
(Nominal) Standard Width: 16"
Standard Thickness: 6"
Finish : Hollowed, all edges rock faced



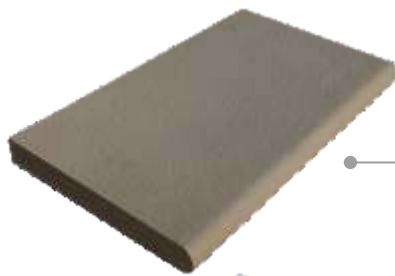
Sunset Buff

Sizes : Standard Length: 4'
(Nominal) Standard Width: 16"
Standard Thickness: 6"
Finish : Hollowed, all edges rock faced

COPINGS



When it comes to giving your Pool or riser a modern and more contemporary appearance, our Copings available in four different colors, definitely have a practical and visual edge.



Sunset Buff

Sizes : Standard Length: 24"
(Nominal) Standard Width: 14"
Standard Thickness: 2"

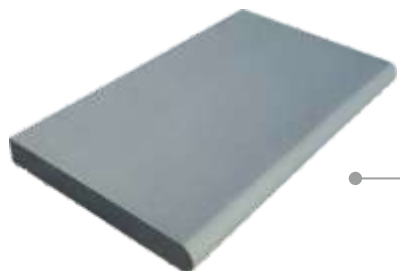
Finish : Surface Suede, 1 long edge bullnosed
3 edges sawn



Imperial White

Sizes : Standard Length: 24"
(Nominal) Standard Width: 14"
Standard Thickness: 2"

Finish : Surface Suede, 1 long edge bullnosed
3 edges sawn



Castle Grey

Sizes : Standard Length: 24"
(Nominal) Standard Width: 14"
Standard Thickness: 2"

Finish : Surface Suede, 1 long edge bullnosed
3 edges sawn



Ochre Yellow

Sizes : Standard Length: 24"
(Nominal) Standard Width: 14"
Standard Thickness: 2"

Finish : Surface Suede, 1 long edge bullnosed
3 edges sawn

STEPPING STONES

World of Stones
LIVE WITH NATURE

Set in lawns and gravel, stepping stones represent a charming way to add a wonderful distinctive feature to any garden. Not only offering a practical solution to help you walk about your garden, they can also add real visual interest and character. Available in two different colors with a variety of four different shapes.

Castle Grey / Sunset Buff

Sizes : Standard Length (Random): 24"

(Nominal) Standard Width (Random): 18"

Standard Thickness: 1"

Finish : Natural Surface with hand split edges



Castle Grey



Sunset Buff

SIZES & LAYING PATTERN



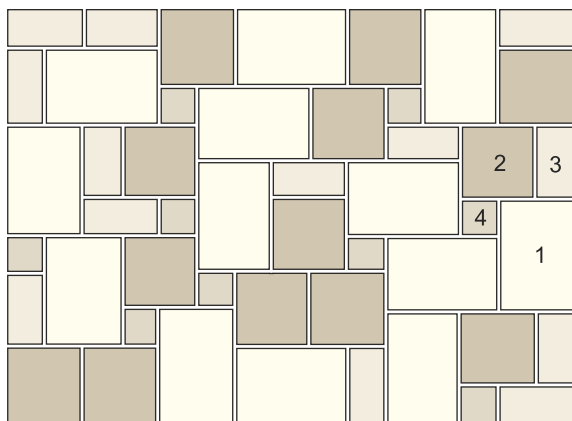
Sawn edges



Hand split edges

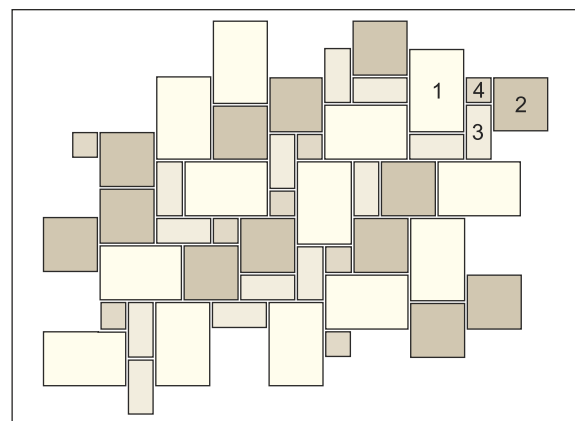


Laying Patterns



Standard

- 1 = 13 x 36" x 24"
- 2 = 13 x 24" x 24"
- 3 = 13 x 24" x 12"
- 4 = 9 x 12" x 12"



Repeatable

Color

Every effort has been made to give true representation of color in these photographs. Due to natural variation in the products, each stone and therefore each floor and wall will have its own unique character and appearance. It is important to view a range of samples to acknowledge the authentic diversity in colors, texture and markings.

Dimensions

All dimensions quoted in this brochure are nominal and are subject to manufacturing tolerance.

Maintenance & Sealers

Regular maintenance is required to keep the overall appearance of the product in pristine condition. Kindly note some natural stone pieces may contain small iron content and when in contact with water can oxidize causing rust marks to the surface of paving. There are numerous proprietary stain/rust removal products on the market that can be used with Natural Stone. When using these products always follow manufacturer's application and safety advice. There are sealers available to give same appearance, semi gloss, high gloss etc. When using cleaner/sealers consult with manufacturers recommendation and applications methods.

Health & Safety

Some Products in our range are heavy. It is suggested that items which are heavy over 25 Kg (55 lbs) or those that are awkward in shape should be handled by more than one person or by suitable lifting equipment . It is suggested that work gloves, eye protection and respiratory protection are used whenever appropriate.

Installation Guidelines

Visit www.worldofstonesusa.com for further information.

Trading Terms

The same is available on request.

Please Note

Our policy is of continual improvement, innovation and development and as such we reserve the right to change specification without notice. Since it is natural product its availability cannot be guaranteed forever and hence product can be discontinued if it is not available.

World of Stones products are only available through our authorized dealer network. Please visit our website to find a dealer near you.

INFRASTRUCTURE & PACKAGING



Stone, though a naturally hard material, needs to be packed securely in order to withstand the rigours of transport.

To ensure that our products reach our customers in perfect condition we:

- Produce & Control our high specification crates in house
- Only use timber from certified sustainable sources
- Further secure our crates by banding and shrink wrapping
- Following years of experience, carefully load and maximise crates into container
- Use additional wide straps to secure crates in container limiting movement and thus ensuring safe arrival at destination

Barcoding of crates and product may be available on request.

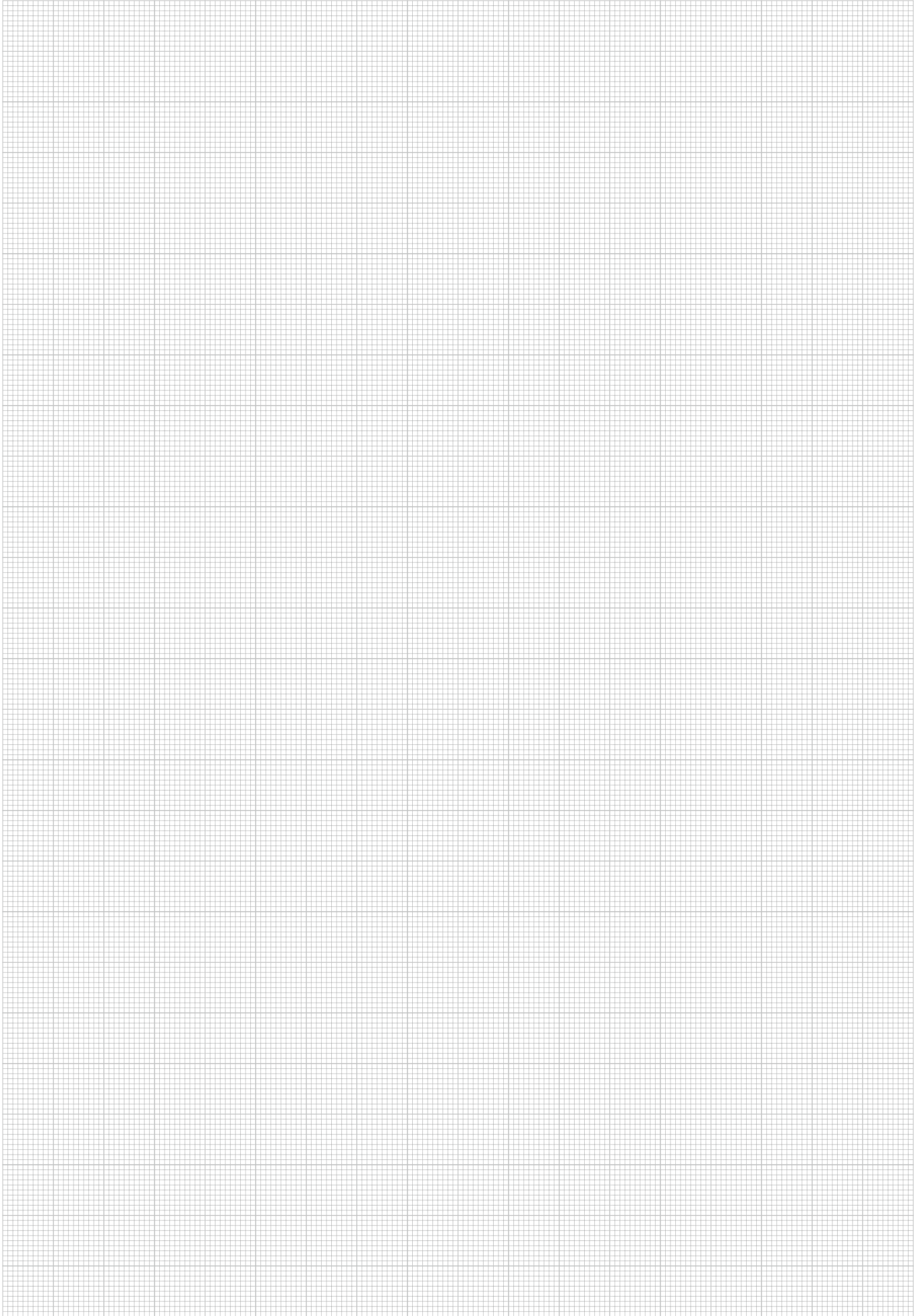


World of Stones

Flagship Stores at Mumbai, Delhi, Bengaluru and Ahmedabad



NOTES





World of Stones

LIVE WITH NATURE

W: www.worldofstonesusa.com

T: 855.967.1872

E: info@worldofstonesusa.com



[worldofstonesusa](https://www.facebook.com/worldofstonesusa)



[worldofstonesusa](https://twitter.com/worldofstonesusa)



[WoSUSA](https://www.pinterest.com/WoSUSA)



[Worldofstonesusa](https://www.youtube.com/Worldofstonesusa)

